



ASSOCIATION FOR WOMEN IN ARCHITECTURE + DESIGN



SPONSORSHIP

awaplusd.org

2807 Oregon Court, Unit F 6/7 Torrance, CA 90503

p 310.534.8466 ▶ f 310.257.1942

ABOUT AWA+D



OUR MISSION

To advance and support Women in the allied fields of architecture and design. We encourage and foster high levels of achievement by providing

- Educational programming
- Mentoring
- Career opportunities for professional and students in these fields
- Cultivating awareness of the value and advancements created by women in our profession.

The Association for Women in Architecture and Design is a 501(c)6 Professional Society dedicated to supporting career and educational endeavors for women in the built environment.



OUR MEMBERS

OUR MEMBERS

Our members are an interdisciplinary group of professionals working in the built environment throughout the Los Angeles area and beyond. We are a diverse group of:

- ▷ Architects
- ▷ Interior Designers
- ▷ Structural engineers
- ▷ Landscape Designers and Landscape Architects
- ▷ Allied professions

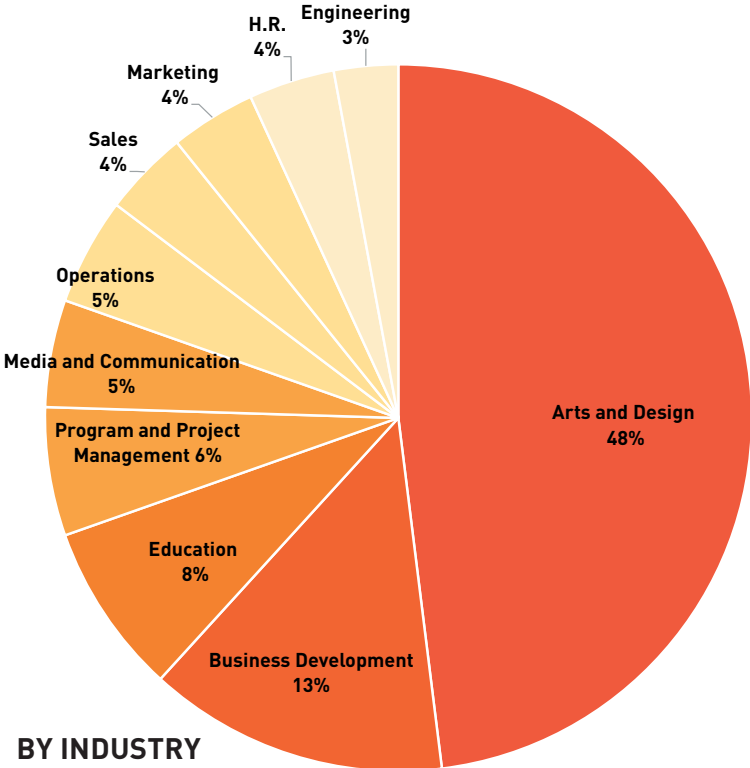


Membership is open to Professional Members from all design disciplines and Associate Members who support our goals and want to be an integral part of the conversation.

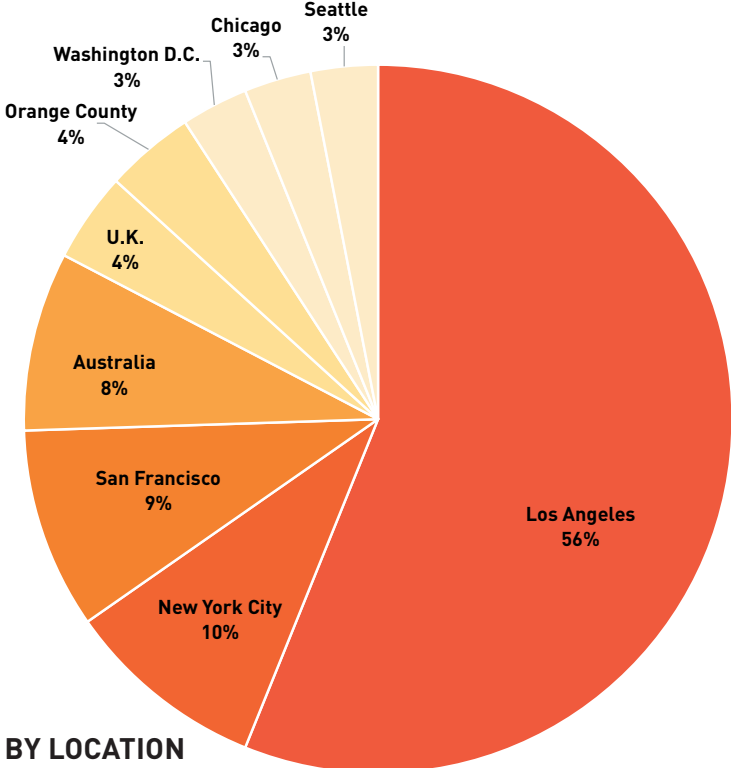
OUR REACH:

- ▷ Yearly Membership: 200+
- ▷ Social Media followers: 3200+
- ▷ Biweekly Newsletter subscribers: 1100+
- ▷ Newsletters per year: 24

SOCIAL MEDIA DEMOGRAPHICS



BY INDUSTRY



BY LOCATION

AWA+D HERSTORY



From Four Women to a National Movement

The Association for Women in Architecture + Design has a rich history dating back to 1915. The Founders were four female architectural students at Washington University in St. Louis. After being denied entry into the men's architectural fraternity, these pioneering women organized their own society, called La Confrerie Alongine.

As interest grew from other campuses, in 1922 a national student association was formed that they called, Alpha Alpha Gamma. Between the years of 1924-1948, professional chapters were formed to provide support for the challenges they faced as women entering the workforce.

In 1948 at their National Conference in San Francisco, they voted to rename the professional chapters "The Association of Women in Architecture and Allied Arts (AWA)."

By 1950 there were nearly twenty student and professional chapters across the country. The pressures of maintaining a national Association, including funding annual conventions and publishing a newsletter the Keystone, precipitated a re-organization in 1964 and thus the national organization dissolved. Professional and student chapters continued in cities and universities across the nation.

AWA+D has a 100 year legacy of supporting women in architecture and design fields, and was born from a nation-wide grassroots movement of students and professionals.

The Los Angeles Area Association

The Association for Women in Architecture – Los Angeles (AWA-LA) was one of the largest and continues to be the only surviving original chapter of AWA. In 1975 we wanted to better reflect the broadening of our membership to include anyone interested in supporting women in the professions, including men, so "for Women" was introduced to replace the original "of Women" in our name.

Our organization's legacy has had a significant national impact as its membership has always included incredibly renowned practitioners and leaders. Among our notable "firsts" is Norma Sklarek, credited with being the first African-American woman to receive her architectural license in New York and the first woman in our country to be elected a Fellow in the American Institute of Architects (FAIA). In 1985 Ms. Sklarek joined the Margot Siegel AIA Architecture firm, established by our member, Margot Siegel, in 1971. Along with fellow AWA-LA member, Kate Diamond, the union of these three members created the largest woman-owned and operated firm of its time in the western United States: Siegel, Sklarek, & Diamond.



AWA+D HERSTORY

AWA+D Today

Distinct in its equal inclusion of professionals from across the architectural and design fields our professional membership currently includes: Architects, Interior Designers, Graphic & Product Designers, Urban Planners, Environmental Designers, Landscape Architects & Designers, Building Engineers, Contractors and students enrolled in these fields. We recognize the tremendous advances and rapid changes impacting all design disciplines and we embrace the need for and benefit of greater collaboration and exchange. In 2012, to emphasize our commitment to furthering the cross-pollination of a range of design disciplines and to refocus and refresh the organization's programming goals, AWA-LA formally became known as the Association for Women in Architecture + Design (AWA+D). We offer innovative programming not found elsewhere, as well as the time and space for women to contribute more to the design profession while becoming more successful individuals.



KEY DATES:

- ▷ **1922 Alpha Alpha Gamma** national student association is formed
- ▷ **1948** professional chapters nationwide are renamed **The Association of Women in Architecture and Allied Arts (AWA)**
- ▷ **1975** the LA chapter renames to be more inclusive and becomes the **Association for Women in Architecture - Los Angeles (AWA-LA)**
- ▷ **2012** recognizing the cross-pollination of design disciplines, we became the **Association for Women in Architecture + Design (AWA+D)**

PAST PRESIDENTS

2022-2023 Meg Coffee
2021-2022 Sona Gevorkyan
2020-2021 Meg Coffee
2019-2020 Audrey Sato
2018-19 Sara Guerena
2017-18 Terri Moore
2016-17 Christina Monti
2015-16 Kishani De Silva
2014-15 Anna Harris
2013-14 Nicole Davis Tinkham
2011-13 Pamela Leone
2010-11 Alissa Kauffman
2009-10 April Sakai
2008-09 Pamela Domingo
2007-08 Mehrnoosh Mojallali
2006-07 Kara Newmark
2005-06 Kate Svoboda-Spanbock
2004-05 Kate Svoboda-Spanbock
2003-04 Gina Najm
2002-03 Rochelle Mills
2001-02 Nina Briggs
2000-01 Stephanie Reich

1999-00 Isabelle Duvivier
1998-99 Diane Lee
1997-98 Mary Werk
1996-97 Barbara Elwood
1995-96 Ethel Rubio
1994-95 Seraphima Lamb
1993-94 Anne Zimmerman
1992-93 Joanne Jackson
1991-92 Lian Hurst Mann
1990-91 Candida Burke League
1989-90 Jan Muntz
1988-89 Alicia Rosenthal
1987-88 Virginia Tanzmann
1986-87 Katherine Diamond
1985-86 Katherine Diamond
1984-85 Margaret R. Goglia
1983-84 Catherine Cunningham
1982-83 Vickie Carter
1981-82 Koje Shoraka
1980-81 Koje Shoraka
1979-80 Doris Power

1978-79 Elsa Levisieur
1977-78 Robin Jaffe
1976-77 Nada Borsa
1975-76 Virginia Tanzmann
1974-75 Bett Marriott
1973-74 Tanya Desmari
1972-73 Dorothy Gray Harrison
1971-72 Peggy Cochrane
1970-71 Peggy Cochrane
1969-70 Lorraine Rudoff
1968-69 Lorraine Rudoff
1967-68 Marjorie (Mikki) Killen
1966-67 Dorothy Gray Harrison
1965-66 Dorothy Gray Harrison
1964-65 Anne Warren Knowles
1963-64 Anne Warren Knowles
1962-63 Barbara Elwood
1961-62 Lillian Herman
1960-61 Barbara Elwood
1959-60 Betty Gardner
1958-59 Edith Shoor

1957-58 Laura Tedesco
1956-57 Elizabeth Boyter
1955-56 Jean Driskel
1954-55 Edith Shoor
1953-54 Olive Chadeayne
1952-53 Lucille Bryant Raport
1951-52 Olive Chadeayne



PROGRAMMING

ANNUAL CELEBRATION EVENTS

ANNUAL SYMPOSIUM

This event is typically held in May or June. AWA+D provides multi-day programming including distinguished keynote speakers, panel discussions, networking, and exhibitions.

Additionally, the scholarship and fellowship awards presented by our sister organization, AWAf. This landmark event is not to be missed!

ANNUAL MEETING

Our annual meeting, typically held in September, is open to current and prospective members, with opportunities for networking, reflecting on the year past, and looking forward to the year ahead.

WINTER GALA

In conjunction with our sister organization, AWAf, this is a year-end party open to all, celebrating the season and marking the close of our year

TYPICAL EVENTS

Community Engagement

Advocacy Committee

Collective Impact Series (USGBC-LA, SoCalNOMA, etc.)

Salon

Educational

Cocktails + Series

Small Business Seminars

Speed Talks (with WiA, SoCalNOMA, AAA/e)

Sponsored Lecture Series (with UCLA, Woodbury, Cal Poly Pomona)

Study Resource Library

Workshops (sketching, photography)

Mentoring

Mid-Career Mentorship

Portfolio Review

Speed Mentoring

Networking

Book Club

Membership Mixers

Tours

Firm Tours

Notable Architecture, such as the Sheats-Goldstein Residence





ANNUAL SPONSORSHIP LEVELS

	GOLD \$3,000	PLATINUM \$5,000	DIAMOND \$7,000
BENEFITS	1 YEAR SPONSORSHIP OF AWA+D		
RECOGNITION			
LINK + LOGO ON AWA+D HOMEPAGE	1 YEAR	1 YEAR	1 YEAR
FEATURED POST ON SOCIAL MEDIA + BLOG	1 / YEAR	2 / YEAR	3 / YEAR
E-NEWSLETTER FEATURE ON HEADER		1 / YEAR	3 / YEAR
FEATURED SPONSOR AT ALL IN-PERSON EVENTS	YES	YES	YES
PERKS			
PROFESSIONAL MEMBERSHIP (\$95 VALUE)	1 MEMBER	2 MEMBERS	4 MEMBERS
ADDITIONAL MEMBERSHIPS AT DISCOUNTED RATE OF \$75	7 MEMBERS	10 MEMBERS	15 MEMBERS
TICKETS TO AWA+D ANNUAL SYMPOSIUM	2 TICKETS	3 TICKETS	4 TICKETS
TICKETS TO OTHER AWA+D EVENTS	-	-	2 TICKETS
PROMOTIONAL MATERIALS DISPLAYED AT EVENTS	-	YES	YES
COMPLIMENTARY JOB POSTINGS ON AWA+D WEBSITE	-	3 MONTHS	6 MONTHS

Specific event and initiative sponsorship, in addition to custom packages, are available.

EVENT SPONSORSHIP

EVENT-SPECIFIC SPONSORSHIP LEVELS

BRONZE
\$300

SILVER
\$750

GOLD
\$1,500

BENEFITS

RECOGNITION

RECOGNITION IN ALL PRINT AND ELECTRONIC MATERIALS RELATED TO THE EVENT

YES

YES

YES

SPECIAL MENTION AT THE EVENT

YES

YES

YES

PERKS

TICKETS TO THE EVENT

1 TICKET

2 TICKETS

4 TICKETS

PROMOTIONAL MATERIALS ON DISPLAY AT EVENT

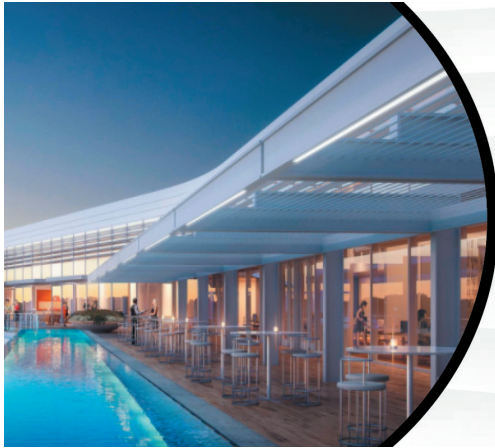
YES

YES

YES

If our pre-set levels for sponsorship do not fit your company's needs, custom packages are available.





Proud Supporter of the
Association of Women in Architecture and Design
and women in the AEC community.

**SHIMAHARA
VISUAL**

shimaharavisual.com • 310.450.9612 • 212.488.2610

SAMPLE SPONSOR RECOGNITION

SAMPLE NEWSLETTER HEADER

These examples represent the typical high-quality graphic design that our sponsors receive in print and digital media, recognizing their support and contributions to our organization.

SAMPLE PRINTED MATERIALS

We thank and encourage continued support of our sponsors.



PLANTINUM SPONSORS



EVENT SPONSORS



DISTINGUISHED PARTNERS



IN-KIND SPONSORS